



*C 150*

# LIST OF THE EXPLODED VIEWS



*SHELL ASSY*

*COOLING SYSTEM*

*HYDRAULIC CIRCUIT*

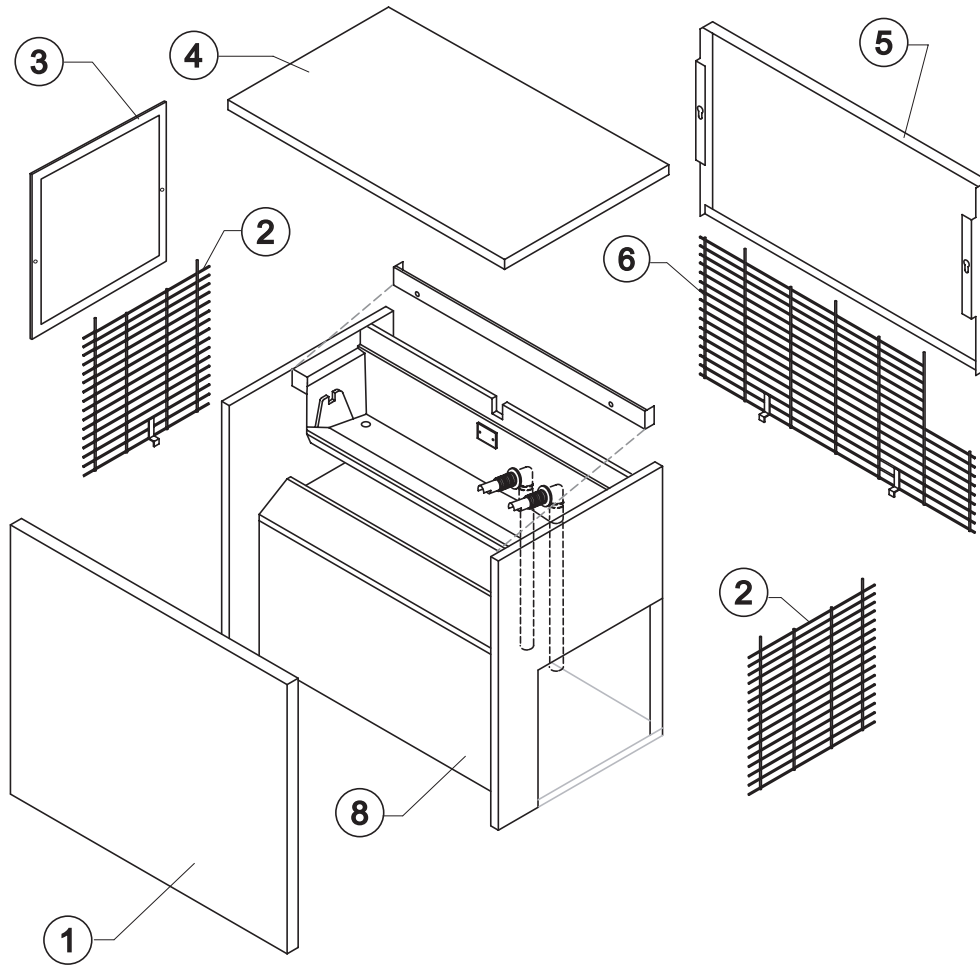
*ELECTRIC PARTS*



# C 150

# SHELL ASSY

Rev. 15 - 12/03/2019



Ref.	Spare Description	Code
1	Front Panel Assembly	C22125
2	Side Grid	D12036
3*	Filter	Air Cooled Version 18163
4	Top Assembly	C22124
5	Rear Panel	22127
6	Rear Grid	D12068
8	Foamed Cabinet Assy	See Table

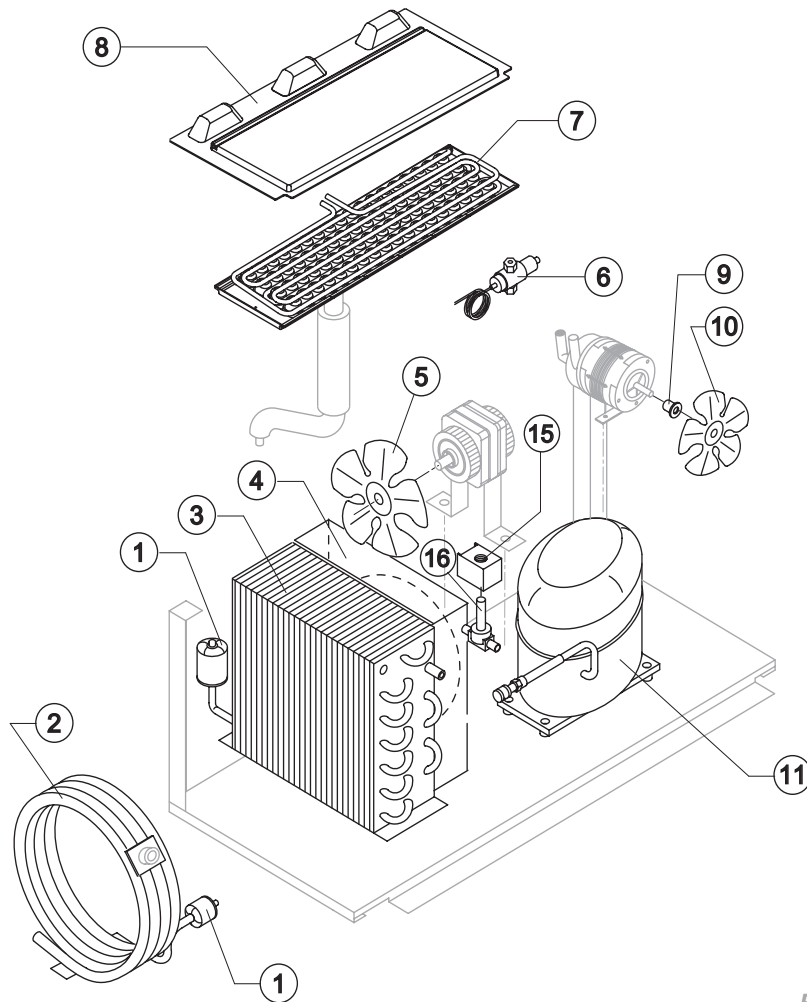
### Ref. 1 - Foamed Cabinet Assy

Condensation	Code
Air	C11020A
Water	C11020W



# C 150

# COOLING SYSTEM



### Common Parts

Ref.	Spare Description	Code
1*	Solid Core Drier	14084
7	Evaporator	See Table
8	Evaporator Cover Panel	10454
9	Fan Fixing Hub	10014
10	Sucking Fan	10213
11	Compressor	See Table
15*	Hot Gas Valve Coil	See Table
16*	Hot Gas Valve Body	20409

### Parts for Air-Cooled Version Only

Ref.	Spare Description	Code
3	Air Condenser	Current Version 20924
3	Air Condenser	Till s/n. 439805 20426
4	Conveyor	Only 110-115V /60Hz 10238
5	Sucking Fan	220V /50-60Hz 20407
5	Sucking Fan	110-115V /60Hz 20671

### Parts for Water-Cooled Version Only

Ref.	Spare Description	Code
2	Water Condenser	14081
6	Pressostatic Valve	20210

### Ref. 7 - Evaporator

Kind of Cube	Code
18 g. (Standard)	D10214
33 g.	D10092
13 g.	D10126
42 g.	D10477
60 g.	D10555

### Ref. 11 - Compressor

Voltage	Code
220-240V /50Hz	23878
220-230V /60Hz	23874
110-115V /60Hz	23586

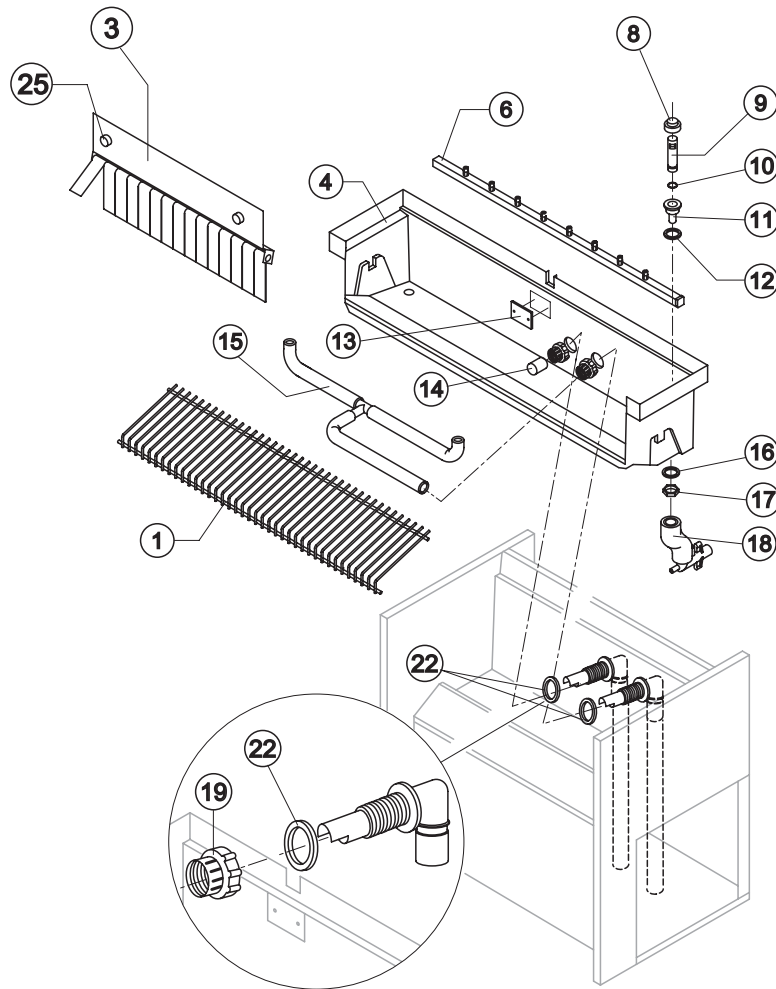
### Ref. 15\* - Hot Gas Valve Coil

Voltage	Code
220-240V /50Hz	231294
220-230V /60Hz	231294
110-115V /60Hz	23256



# C 150

# HYDRAULIC CIRCUIT



### Common Parts

Ref.	Spare Description	Code
1	Ice Cubes Slide	See Table
3	Flags Support Assy	C22134
4	Inner Basin	10055
6*	Sprayers Bar Assembly	See Table
8	Overflow Cap	Till s/n. 243901 10305
9*	Overflow Pipe	10133
10*	OR Gasket for Overflow Pipe	20233
11	Water Outlet Nipple	10472
12	Gasket	13219
13	Slide Keep Plate	Till s/n. 234237 10009
14*	Pump Suction Filter	20005
15	Sprayers Feeding Pipe Connection	C13037
16	Semirigid Polyethylene Gasket	13007
17	Bin Discharge Nut	10096
19	Fitting Locking Ring	10405
22	Gasket for Pump Suction/Delivery Pipes	13220
25	Fixing Screw	20009

### Parts for Air Cooled Version Only

Ref.	Spare Description	Code
18	Discharges Manifold	C10006

### Parts for Water Cooled Version Only

Ref.	Spare Description	Code
18	Discharges Manifold	C26452

### Ref. 1 - Ice Cube Slide

Kind of Cube	Code
18 g. (Standard)	D12022
33 g.	D12033
13 g.	D12040
42 g.	D12033
60 g.	D12084

### Ref. 6\* - Sprayers Bar Ass.

Kind of Cube	Code
18 g. (Standard)	C20144
33 g.	C20157
13 g.	C20200
42 g.	C20157
60 g.	C20941



# C 150

# ELECTRIC PARTS

## Common Parts

Ref.	Spare Description	Code
3*	1 Way- Water Inlet Valve	See Table
8*	Pump Assy	See Table
10*	Contactor	See Table
13*	Bin Thermostat	R23421
14*	Evaporator Thermostat	R23591
15*	Timer	See Table
16*	On/Off Rocker Switch	23327

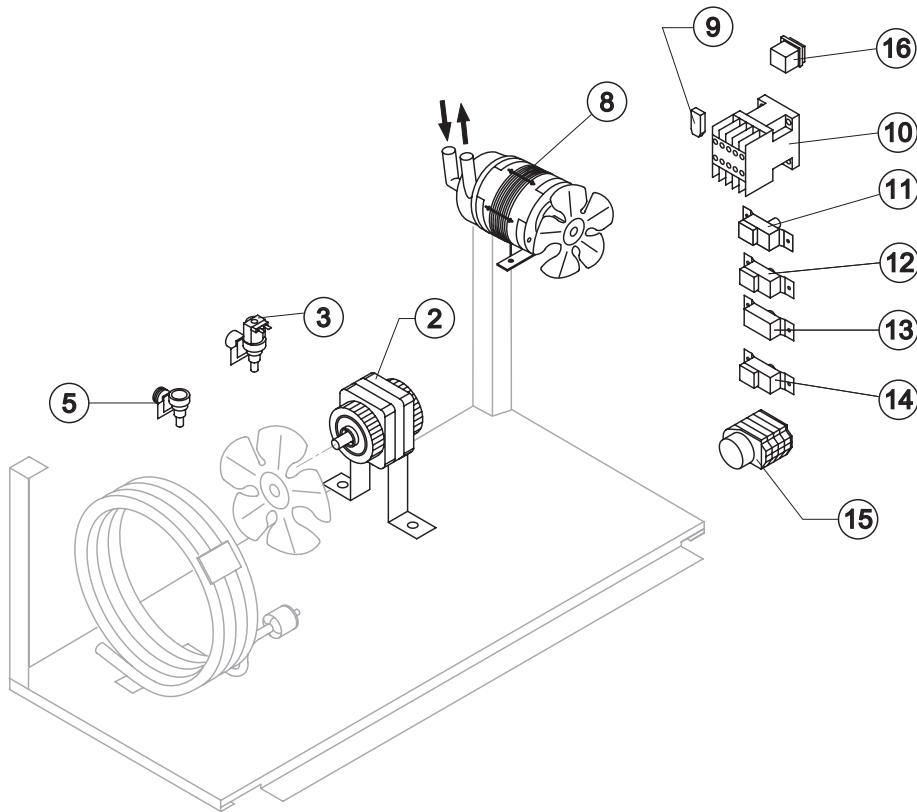
## Parts for Air-Cooled Version Only

Ref.	Spare Description	Code
2*	Fan Motor	See Table
9	Anti Radio Interference Filter	Only 220V 50 Hz C23459
11	Safety Pressure Switch	From s/n. 529518 23342
12*	Condenser Pressure Switch	23175

## Parts for Water-Cooled Version Only

Ref.	Spare Description	Code
5	1 Way- Water Inlet Valve	10368
11	Safety Pressure Switch	23342

Rev. 15 - 12/03/2019



### Ref. 2\* - Fan Motor

Voltage	Code
220-240V /50Hz	23121
220-230V /60Hz	23121
110-115V /60Hz	23621

### Ref. 3\* - 1 Way- Water Inlet

Voltage	18g/13gCube	33gCube	42gCube
220-240V /50Hz	23220	23220	23787
220-230V /60Hz	23220	23787	23787
110-115V /60Hz	23281	23789	23789

### Ref. 8\* - Pump Assy

Voltage	Code
220-240V /50Hz	RC23462
220-230V /60Hz	RC23462
110-115V /60Hz	RC23663

### Ref. 10\* - Contactor

Voltage	Code
220-240V /50Hz	23594
220-230V /60Hz	23594
110-115V /60Hz	231088

### Ref. 15\* - Timer

Voltage	18gCube	33gCube	13gCube	42gCube	60gCube
220-240V /50Hz	23247	23248	23472	23780	23922
220-230V /60Hz	231082	231080	231077	231080	TBD
110-115V /60Hz	23833	23786	23258	23786	TBD